

---

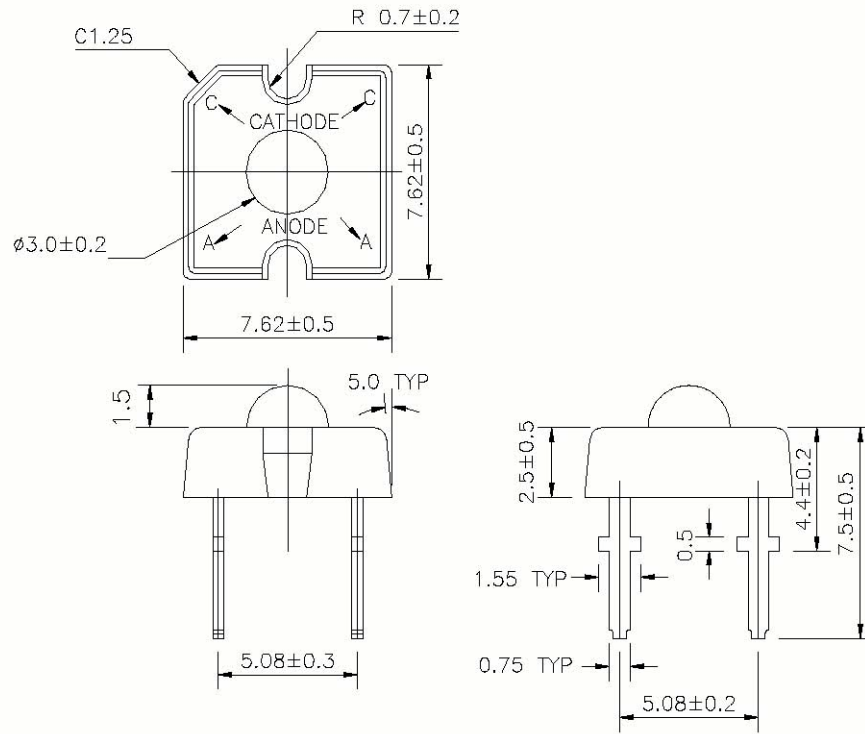
---

Part No.	AL-30-01TYC		Diff No.		
7.62mm	mm	SUPER FLUX LED	Type	LED Lamps	

High Power LED

**MODEL NO: AL-30-01TYC**

**Package Dimensions:**    **Notes:** All dimensions are in millimeters.



### Absolute Maximum Ratings\*

Parameter	Symbol	Rating	Units
Forward Current	$I_F$	70	mA
Pulse Forward Current* <sub>1</sub>	$I_{FP}$	100	mA
Reverse Voltage	$V_R$	5	V
Power Dissipation	$P_D$	120	mW
Operating Temperature	$T_{opr}$	-30 ~ +80	□
Storage Temperature	$T_{stg}$	-40 ~ +100	□
Soldering Temperature* <sub>2</sub>	$T_{sol}$	260	□

\*1.  $I_{FP}$  Conditions--Pulse Width □ 10msec and Duty □ 1/10

\*2. Soldering time □ 5 seconds

### Electro-Optical Characteristic (Ta=25 □)

Parameter	Symbol	Condition	Min.	Typ.	Max.	Units

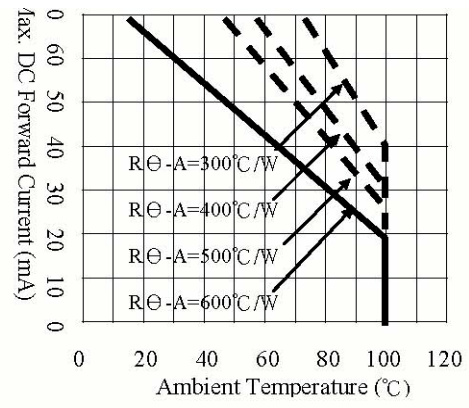
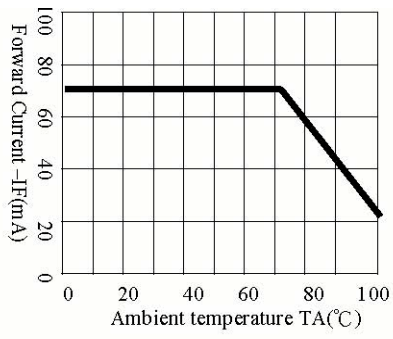
Peak Wavelength	$\lambda_p$	$\square$	587	$\square$	nm	$I_F=20mA$
Dominant Wavelength	$\lambda_d$	$\square$	589	$\square$	nm	$I_F=20mA$
Forward Voltage	$V_F$	$I_F=20mA$	--	2.2	2.6	V
Reverse Current	$I_R$	$V_R=5V$	--	--	10	$\mu A$
Brightness Intensity	$I_V$	$I_F=20mA$	250	400	--	mlm
Viewing Angle	2 $\theta$ 1/2	$I_F=20mA$	--	60	--	deg

## Reliability Test Conditions

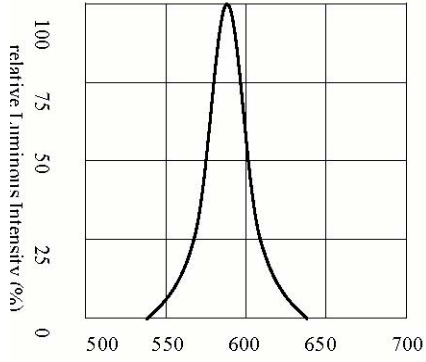
NO.	Condition	Test Condition	Test Hour/ Cycle	Sample Size	Accept/ Reject
1	Room Temperature DC Operating Life	$T_a=25\square$ $I_F=20mA$	1000hrs	80PCS	0/1
2	Thermal Shock	-10 $\square$ (5min) (10sec) +100 $\square$ (5min)	100cycles	80PCS	0/1
3	Temperature Cycle	- 40 $\square$ (30min) (5min) +85 $\square$ (30min)	100cycles	80PCS	0/1
4	High Temperature / High Humidity	85 $\square$ / 85 $\square$ RH	1000hrs	80PCS	0/1

	Test				
5	High Temperature Storage	Ta=100□	1000hrs	80PCS	0/1
6	Low Temperature Storage	Ta=-40□	1000hrs	80PCS	0/1
7	Solder Heat	260□±5□	5secs	80PCS	0/1

**Typical Electro-Optical Characteristics Curves**



Spectrum Distribution Ta=25°C



Radiation Diagram Ta=25°C

